

# Bass Clef

Trombone  
Baritone  
Euphonium  
Bassoon

# Beginner Band Tunes

34 Songs with 6 Notes or Less!

## 1) Shark Attack

Two staves of musical notation for the song 'Shark Attack'. The first staff begins with a bass clef and a 4/4 time signature. The melody consists of a whole note G2, followed by a quarter rest, a quarter note Bb2, a quarter rest, a quarter note G2, a quarter rest, a quarter note F2, a quarter rest, and a quarter note E2. The second staff continues with a quarter note D2, a quarter rest, a quarter note C2, a quarter rest, a quarter note Bb1, a quarter rest, a quarter note A1, a quarter rest, a quarter note G1, a quarter rest, and a quarter note F1.

## 2) Hot Cross Buns

Two staves of musical notation for the song 'Hot Cross Buns'. The first staff begins with a bass clef and a 4/4 time signature. The melody consists of a whole note G2, a half note A2, a half note Bb2, a whole note C3, a half note D3, and a half note E3. The second staff continues with a half note F3, a half note G3, a half note A3, a half note Bb3, a whole note C4, a half note D4, and a half note E4.

## 3) Pierrot (Au Claire De La Lune)

Two staves of musical notation for the song 'Pierrot (Au Claire De La Lune)'. The first staff begins with a bass clef and a 4/4 time signature. The melody consists of a whole note G2, a half note A2, a half note Bb2, a whole note C3, a half note D3, a half note E3, a whole note F3, a half note G3, a half note A3, a whole note Bb3, a half note C4, and a half note D4. The second staff continues with a half note E4, a half note F4, a half note G4, a half note A4, a whole note Bb4, a half note C5, a half note D5, and a whole note E5.

## 4) Merrily We Roll Along

Two staves of musical notation for the song 'Merrily We Roll Along'. The first staff begins with a bass clef and a 4/4 time signature. The melody consists of a whole note G2, a half note A2, a half note Bb2, a whole note C3, a half note D3, a half note E3, a whole note F3, a half note G3, a half note A3, a whole note Bb3, a half note C4, and a half note D4. The second staff continues with a half note E4, a half note F4, a half note G4, a half note A4, a whole note Bb4, a half note C5, a half note D5, and a whole note E5.



5) Minor Buns

Sheet music for "Minor Buns" in bass clef, 4/4 time. The first line contains two measures of half notes: Bb, Bb, Gb, Gb, Eb, Eb, Eb. The second line contains two measures of quarter notes: Bb, Bb, Gb, Gb, Eb, Eb, Eb, and a final half note Eb.

6) We Will Rock You

Sheet music for "We Will Rock You" in bass clef, 4/4 time. The first line contains two measures of quarter notes: Bb, Bb, Gb, Gb, Eb, Eb, Eb, and a final half note Eb.

7) "Let's Go" Cheer

Sheet music for "'Let's Go' Cheer" in bass clef, 4/4 time. The first line contains two measures of quarter notes: Bb, Bb, Gb, Gb, Eb, Eb, Eb, and a final half note Eb. The second line contains two measures of eighth notes with stems up, and a final half note Eb. Above the second measure, there is a "(clap or stomp)" instruction.

8) "Here We Go" Cheer

Sheet music for "'Here We Go' Cheer" in bass clef, 4/4 time. The first line contains two measures of quarter notes: Bb, Bb, Gb, Gb, Eb, Eb, Eb, and a final half note Eb. The second line contains two measures of quarter notes: Bb, Bb, Gb, Gb, Eb, Eb, Eb, and a final half note Eb. Above the second and fourth measures, there is a "(stomp)" instruction.

9) Celebrate!

Sheet music for "Celebrate!" in bass clef, 4/4 time. The first line contains two measures of quarter notes: Bb, Bb, Gb, Gb, Eb, Eb, Eb, and a final half note Eb.

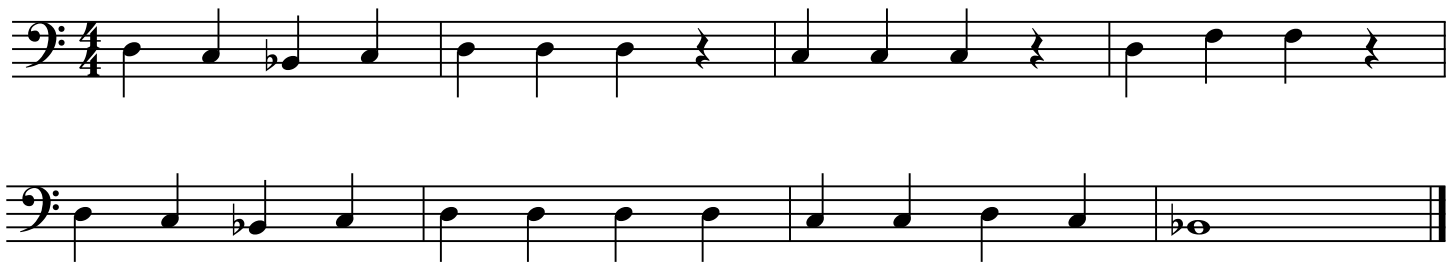
10) Another One Bites the Dust

Sheet music for "Another One Bites the Dust" in bass clef, 4/4 time. The first line contains two measures of quarter notes: Bb, Bb, Gb, Gb, Eb, Eb, Eb, and a final half note Eb. The second line contains two measures of quarter notes: Bb, Bb, Gb, Gb, Eb, Eb, Eb, and a final half note Eb.

### 11) Hot Cross Buns Harmony



### 12) Mary Had a Little Lamb



### 13) Louie Louie



### 14) Hey!



### 15) Eye of the Tiger



### 16) Go Tell Aunt Rhody

Two staves of musical notation for the piece 'Go Tell Aunt Rhody'. The first staff is in bass clef, 4/4 time, and contains four measures of music. The second staff continues the melody for four more measures, ending with a double bar line.

### 17) Minor Mary

Two staves of musical notation for the piece 'Minor Mary'. The first staff is in bass clef, 4/4 time, and contains four measures of music. The second staff continues the melody for four more measures, ending with a double bar line.

### 18) Twinkle Twinkle

Three staves of musical notation for the piece 'Twinkle Twinkle'. The first staff is in bass clef, 4/4 time, and contains four measures of music. The second and third staves continue the melody for four measures each, ending with a double bar line.

### 19) Frere Jacques (Brother John)

Two staves of musical notation for the piece 'Frere Jacques (Brother John)'. The first staff is in bass clef, 4/4 time, and contains four measures of music, with the second and fourth measures marked with a double bar line and repeat sign. The second staff continues the melody for four more measures, also with repeat signs in the second and fourth measures, ending with a double bar line.



20) London Bridge

Two staves of musical notation for 'London Bridge' in bass clef, 4/4 time. The first staff contains four measures of music, and the second staff contains five measures, ending with a double bar line.

21) The Shark Returns

One staff of musical notation for 'The Shark Returns' in bass clef, 4/4 time. The notation includes a wavy line above the final measure, indicating a tremolo effect.

22) London Bridge Harmony

Two staves of musical notation for 'London Bridge Harmony' in bass clef, 4/4 time. The first staff contains four measures, and the second staff contains four measures, ending with a double bar line.

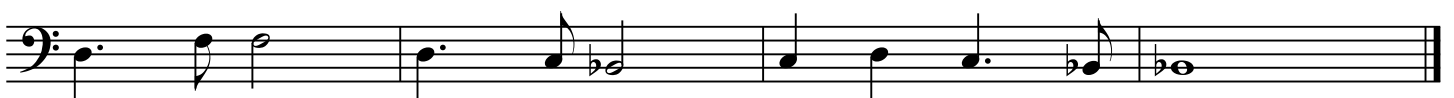
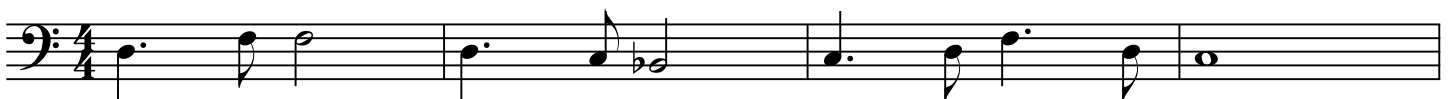
23) Let's Go Band

Two staves of musical notation for 'Let's Go Band' in bass clef, 4/4 time. The notation includes accents (>) over the eighth notes in the second and fourth measures of both staves.

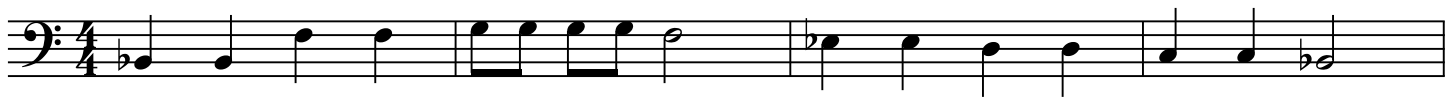
24) Ode To Joy (from Beethoven's 9th Symphony)



25) Theme from New World Symphony (Dvorak)



26) Baa Baa Black Sheep



27) Long, Long Ago

Two staves of musical notation for the piece 'Long, Long Ago'. The first staff begins with a bass clef, a key signature of one flat (B-flat), and a 4/4 time signature. The melody consists of eighth and quarter notes. The second staff continues the melody and ends with a double bar line.

28) Old MacDonald

Three staves of musical notation for the piece 'Old MacDonald'. The first staff begins with a bass clef, a key signature of one flat (B-flat), and a 4/4 time signature. The melody is simple, using quarter and eighth notes. The second and third staves continue the melody, with the third staff ending with a double bar line.

29) When the Saints Go Marching In

Three staves of musical notation for the piece 'When the Saints Go Marching In'. The first staff begins with a bass clef, a key signature of one flat (B-flat), and a 4/4 time signature. The melody features quarter and eighth notes. The second and third staves continue the melody, with the third staff ending with a double bar line.

30) America (My Country 'Tis of Thee)

Two staves of musical notation for the piece 'America (My Country 'Tis of Thee)'. The first staff begins with a bass clef, a key signature of one flat (B-flat), and a 3/4 time signature. The melody consists of quarter and eighth notes. The second staff continues the melody and ends with a double bar line.



### 31) Jingle Bells

Sheet music for "Jingle Bells" in bass clef, 4/4 time. The first staff shows the initial melody. The second staff is the first ending, marked with a bracket and the number "1.". The third staff is the second ending, marked with a bracket and the number "2.". The key signature has one flat (B-flat).

### 32) Good King Wenceslas

Sheet music for "Good King Wenceslas" in bass clef, 4/4 time. The first staff shows the initial melody. The second staff continues the melody. The key signature has one flat (B-flat).

### 33) Dreidel Song

Sheet music for "Dreidel Song" in bass clef, 4/4 time. The first staff shows the initial melody. The second and third staves continue the melody. The key signature has one flat (B-flat).

### 34) Jolly Old St. Nicholas

Sheet music for "Jolly Old St. Nicholas" in bass clef, 4/4 time. The first staff shows the initial melody. The second staff is the first ending, marked with a bracket and the number "1.". The third staff is the second ending, marked with a bracket and the number "2.". The key signature has one flat (B-flat).

