

# Beginner Band Tunes

34 Songs with 6 Notes or Less!

## 1) Shark Attack

Musical notation for 'Shark Attack' in 4/4 time. The first staff begins with a repeat sign and contains a whole note G4, followed by quarter notes A4, B4, C5, and D5. The second staff continues with quarter notes E5, F5, G5, A5, B5, C6, D6, E6, F6, G6, and ends with a whole note G6.

## 2) Hot Cross Buns

Musical notation for 'Hot Cross Buns' in 4/4 time. The first staff contains quarter notes G4, A4, B4, C5, D5, E5, F5, G5, and a whole note G5. The second staff continues with quarter notes A5, B5, C6, D6, E6, F6, G6, A6, B6, C7, and ends with a whole note G6.

## 3) Pierrot (Au Claire De La Lune)

Musical notation for 'Pierrot (Au Claire De La Lune)' in 4/4 time. The first staff contains quarter notes G4, A4, B4, C5, D5, E5, F5, G5, and a whole note G5. The second staff continues with quarter notes A5, B5, C6, D6, E6, F6, G6, A6, B6, C7, and ends with a whole note G6.

## 4) Merrily We Roll Along

Musical notation for 'Merrily We Roll Along' in 4/4 time. The first staff contains quarter notes G4, A4, B4, C5, D5, E5, F5, G5, and a whole note G5. The second staff continues with quarter notes A5, B5, C6, D6, E6, F6, G6, A6, B6, C7, and ends with a whole note G6.



5) Minor Buns

Musical notation for 'Minor Buns' in 4/4 time. The first staff contains a sequence of notes: G4, A4, B4, C5, B4, A4, G4. The second staff contains a sequence of notes: G4, A4, B4, C5, B4, A4, G4, F4, E4, D4, C4.

6) We Will Rock You

Musical notation for 'We Will Rock You' in 4/4 time. The melody consists of quarter notes: G4, A4, B4, C5, B4, A4, G4, F4, E4, D4, C4. There are rests in the second and fourth measures.

7) "Let's Go" Cheer

Musical notation for 'Let's Go' Cheer in 4/4 time. The melody consists of quarter notes: G4, A4, B4, C5, B4, A4, G4, F4, E4, D4, C4. There are rests in the second and fourth measures. Above the rests are the instructions "(clap or stomp)".

8) "Here We Go" Cheer

Musical notation for 'Here We Go' Cheer in 4/4 time. The melody consists of quarter notes: G4, A4, B4, C5, B4, A4, G4, F4, E4, D4, C4. There are rests in the second and fourth measures. Above the rests are the instruction "(stomp)".

9) Celebrate!

Musical notation for 'Celebrate!' in 4/4 time. The melody consists of quarter notes: G4, A4, B4, C5, B4, A4, G4, F4, E4, D4, C4. There are rests in the second and fourth measures.

10) Another One Bites the Dust

Musical notation for 'Another One Bites the Dust' in 4/4 time. The melody consists of quarter notes: G4, A4, B4, C5, B4, A4, G4, F4, E4, D4, C4. There are rests in the second and fourth measures.



11) Hot Cross Buns Harmony

Two staves of musical notation in 4/4 time. The first staff contains a melody of quarter notes: G4, A4, B4, C5, B4, A4, G4, F4, E4, D4, C4. The second staff contains a harmonic accompaniment of quarter notes: C4, D4, E4, F4, G4, A4, B4, C5, B4, A4, G4, F4, E4, D4, C4.

12) Mary Had a Little Lamb

Two staves of musical notation in 4/4 time. The first staff contains a melody of quarter notes: C4, D4, E4, F4, G4, A4, B4, C5, B4, A4, G4, F4, E4, D4, C4. The second staff contains a harmonic accompaniment of quarter notes: C4, D4, E4, F4, G4, A4, B4, C5, B4, A4, G4, F4, E4, D4, C4.

13) Louie Louie

One staff of musical notation in 4/4 time. The melody consists of eighth notes: C4, D4, E4, F4, G4, A4, B4, C5, B4, A4, G4, F4, E4, D4, C4.

14) Hey!

Two staves of musical notation in 4/4 time. The first staff contains a melody of quarter notes: C4, D4, E4, F4, G4, A4, B4, C5, B4, A4, G4, F4, E4, D4, C4. The second staff contains a harmonic accompaniment of quarter notes: C4, D4, E4, F4, G4, A4, B4, C5, B4, A4, G4, F4, E4, D4, C4.

15) Eye of the Tiger

Two staves of musical notation in 4/4 time. The first staff contains a melody of quarter notes: C4, D4, E4, F4, G4, A4, B4, C5, B4, A4, G4, F4, E4, D4, C4. The second staff contains a harmonic accompaniment of quarter notes: C4, D4, E4, F4, G4, A4, B4, C5, B4, A4, G4, F4, E4, D4, C4.



16) Go Tell Aunt Rhody

Two staves of musical notation for the piece 'Go Tell Aunt Rhody'. The first staff begins with a treble clef and a 4/4 time signature. The melody consists of quarter notes and rests. The second staff continues the melody, ending with a whole note on the final line of the staff.

17) Minor Mary

Two staves of musical notation for the piece 'Minor Mary'. The first staff begins with a treble clef and a 4/4 time signature. The melody consists of quarter notes and eighth notes. The second staff continues the melody, ending with a whole note on the final line of the staff.

18) Twinkle Twinkle

Three staves of musical notation for the piece 'Twinkle Twinkle'. The first staff begins with a treble clef and a 4/4 time signature. The melody consists of quarter notes and eighth notes. The second and third staves continue the melody, ending with a whole note on the final line of the third staff.

19) Frere Jacques (Brother John)

Two staves of musical notation for the piece 'Frere Jacques (Brother John)'. The first staff begins with a treble clef and a 4/4 time signature. The melody consists of quarter notes and rests, with repeat signs (double slashes) at the end of the first and third measures. The second staff continues the melody, also featuring repeat signs at the end of the first and third measures.



20) London Bridge

Musical notation for 'London Bridge' in 4/4 time. The first staff contains the melody: G4 (quarter), A4 (quarter), B4 (quarter), C5 (quarter), B4 (quarter), A4 (quarter), G4 (quarter), F4 (quarter), E4 (quarter), D4 (quarter), C4 (half). The second staff contains the bass line: G3 (quarter), A3 (quarter), B3 (quarter), C4 (quarter), B3 (quarter), A3 (quarter), G3 (quarter), F3 (quarter), E3 (quarter), D3 (quarter), C3 (half).

21) The Shark Returns

Musical notation for 'The Shark Returns' in 4/4 time. The first staff contains the melody: G4 (quarter), A4 (quarter), B4 (quarter), C5 (quarter), B4 (quarter), A4 (quarter), G4 (quarter), F4 (quarter), E4 (quarter), D4 (quarter), C4 (half). The second staff contains the bass line: G3 (quarter), A3 (quarter), B3 (quarter), C4 (quarter), B3 (quarter), A3 (quarter), G3 (quarter), F3 (quarter), E3 (quarter), D3 (quarter), C3 (half). The final measure of the second staff features a wavy line above the staff, indicating a tremolo effect.

22) London Bridge Harmony

Musical notation for 'London Bridge Harmony' in 4/4 time. The first staff contains the melody: G4 (quarter), A4 (quarter), B4 (quarter), C5 (quarter), B4 (quarter), A4 (quarter), G4 (quarter), F4 (quarter), E4 (quarter), D4 (quarter), C4 (half). The second staff contains the bass line: G3 (quarter), A3 (quarter), B3 (quarter), C4 (quarter), B3 (quarter), A3 (quarter), G3 (quarter), F3 (quarter), E3 (quarter), D3 (quarter), C3 (half).

23) Let's Go Band

Musical notation for 'Let's Go Band' in 4/4 time. The first staff contains the melody: G4 (quarter), A4 (quarter), B4 (quarter), C5 (quarter), B4 (quarter), A4 (quarter), G4 (quarter), F4 (quarter), E4 (quarter), D4 (quarter), C4 (half). The second staff contains the bass line: G3 (quarter), A3 (quarter), B3 (quarter), C4 (quarter), B3 (quarter), A3 (quarter), G3 (quarter), F3 (quarter), E3 (quarter), D3 (quarter), C3 (half). The final measure of the second staff features a wavy line above the staff, indicating a tremolo effect.



24) Ode To Joy (from Beethoven's 9th Symphony)



Four staves of musical notation for 'Ode To Joy' in G major, 4/4 time. The melody is written in treble clef. The first staff contains the first four measures, the second staff the next four, the third staff the next four, and the fourth staff the final four measures, ending with a double bar line.

25) Theme from New World Symphony (Dvorak)



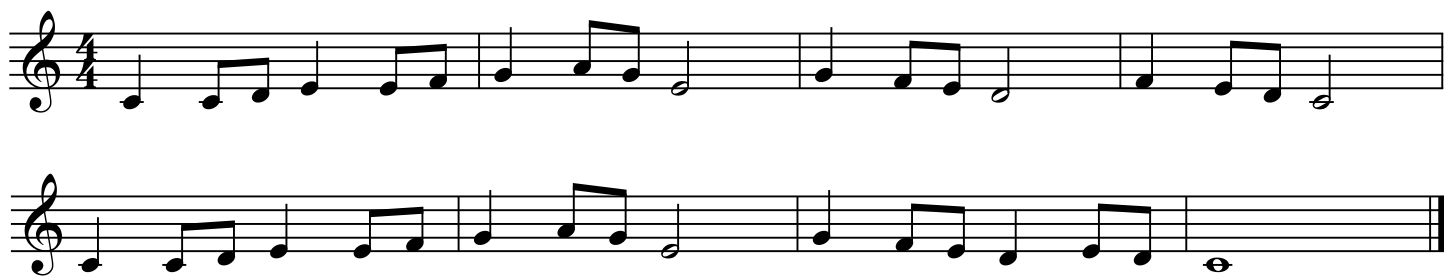
Two staves of musical notation for the 'Theme from New World Symphony' in D major, 4/4 time. The melody is written in treble clef. The first staff contains the first four measures, and the second staff contains the next four measures, ending with a double bar line.

26) Baa Baa Black Sheep



Three staves of musical notation for 'Baa Baa Black Sheep' in G major, 4/4 time. The melody is written in treble clef. The first staff contains the first four measures, the second staff the next four, and the third staff the final four measures, ending with a double bar line.

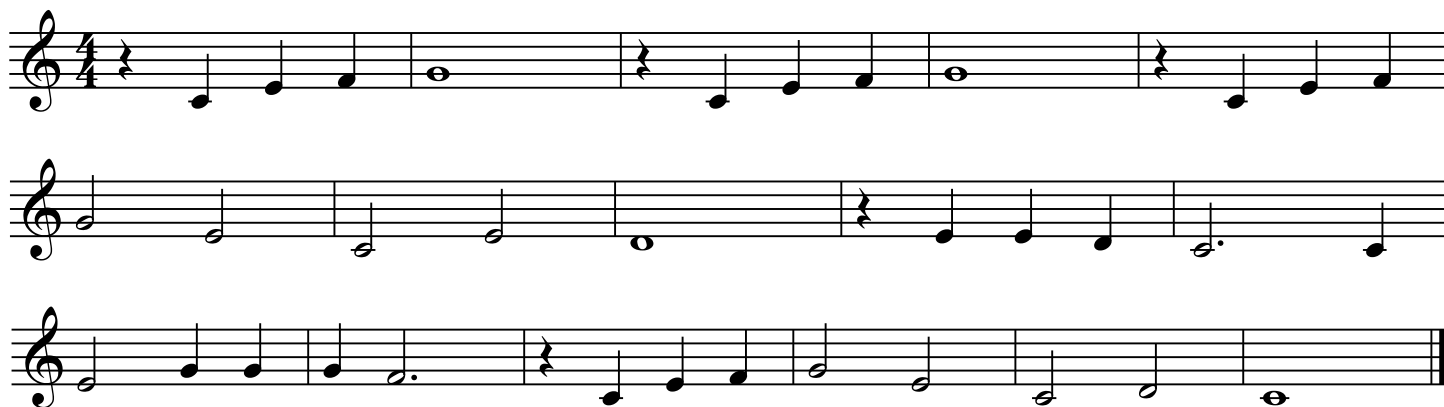
27) Long, Long Ago



28) Old MacDonald



29) When the Saints Go Marching In



30) America (My Country 'Tis of Thee)



### 31) Jingle Bells

Musical notation for "Jingle Bells" in 4/4 time. The first staff shows the beginning of the piece with a treble clef and a key signature of one sharp (F#). The melody consists of quarter and eighth notes. The second and third staves show two different endings, labeled "1." and "2.", both starting with a first ending bracket. The first ending leads to a repeat sign, and the second ending leads to a final double bar line.

### 32) Good King Wenceslas

Musical notation for "Good King Wenceslas" in 4/4 time. The first staff shows the beginning of the piece with a treble clef and a key signature of one sharp (F#). The melody consists of quarter and eighth notes. The second staff continues the melody, ending with a double bar line.

### 33) Dreidel Song

Musical notation for "Dreidel Song" in 4/4 time. The first staff shows the beginning of the piece with a treble clef and a key signature of one sharp (F#). The melody consists of quarter and eighth notes, with some rests. The second and third staves continue the melody, ending with a double bar line.

### 34) Jolly Old St. Nicholas

Musical notation for "Jolly Old St. Nicholas" in 4/4 time. The first staff shows the beginning of the piece with a treble clef and a key signature of one sharp (F#). The melody consists of quarter and eighth notes. The second staff shows two different endings, labeled "1." and "2.", both starting with a first ending bracket. The first ending leads to a repeat sign, and the second ending leads to a final double bar line.

